

Solar Data Systems



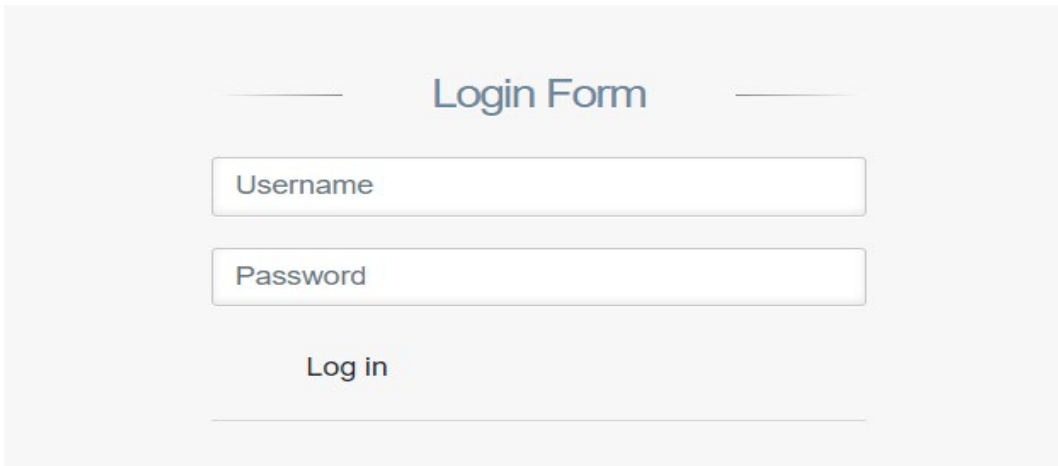
ArrayMeter.com Manual

Plant Owner

Plant Owner User Manual

Click on the following URL to access the Plant Owner User Interface login page.

<http://arraymeter.com/usaportal/production/login.php>



Enter the **login details** provided by your project admin or installer.

Once logged in, you will see the Plant Owner User Interface **Home page**.

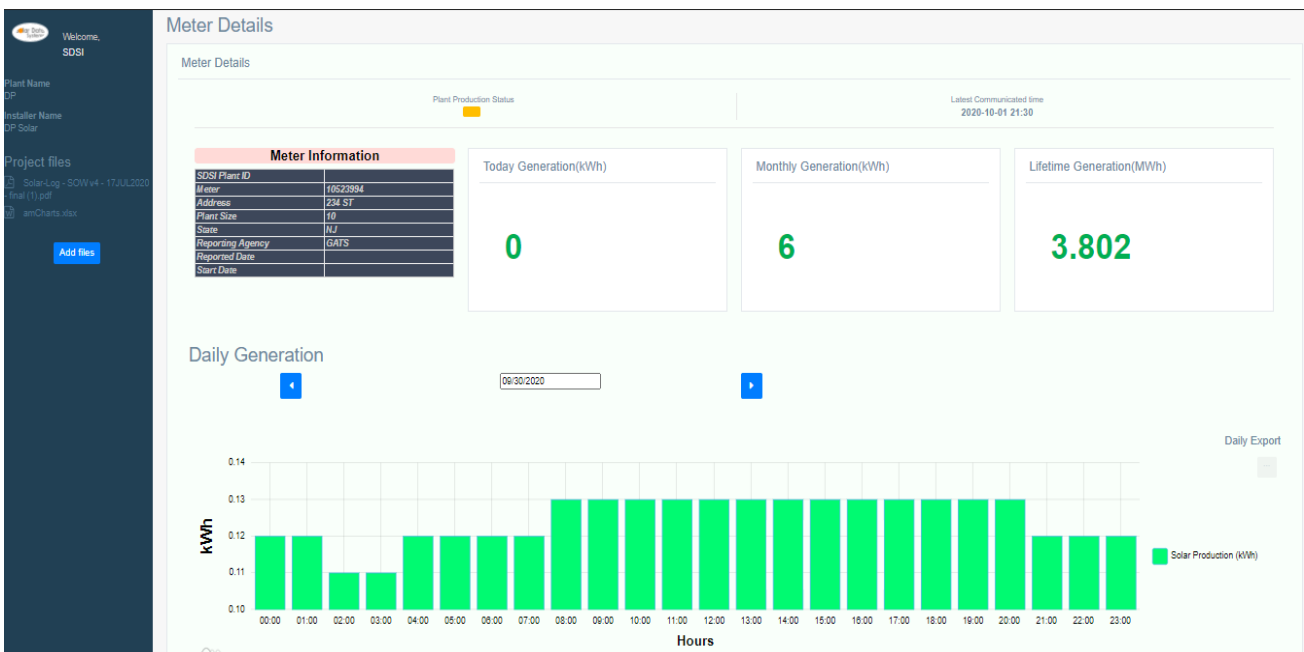


Image shows the full screen view of **Home page** with all the required functionalities provided.

The details will change, relative to the Meter ID.

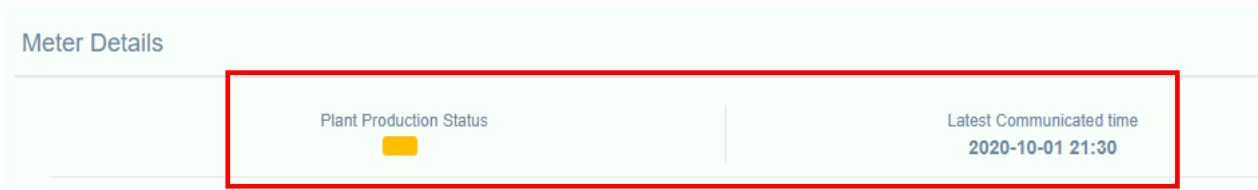
Functionalities of User Interface

1. The **Meter Details** Section consists of:

- **Plant Production status**

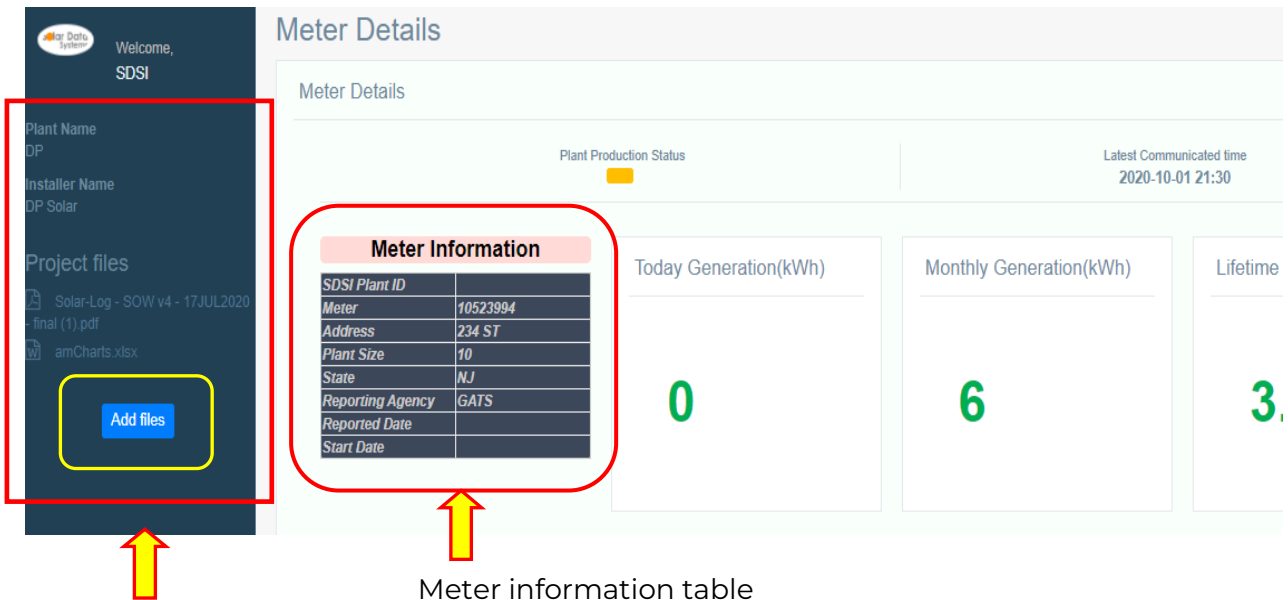
Condition	Color code
Plant Online	Green
No Communication	Orange
No Production	Red

➤ **Last Communication** : The last time that the meter communicated with the portal



Meter Information table consists of Unique Plant ID, Meter ID, Address, Plant Size, State, Reporting Agency name, Reported Date & Start Date.

Next to the meter information table, the user can view today's generation in kWh, monthly generation in kWh and life-time generation in MWh.

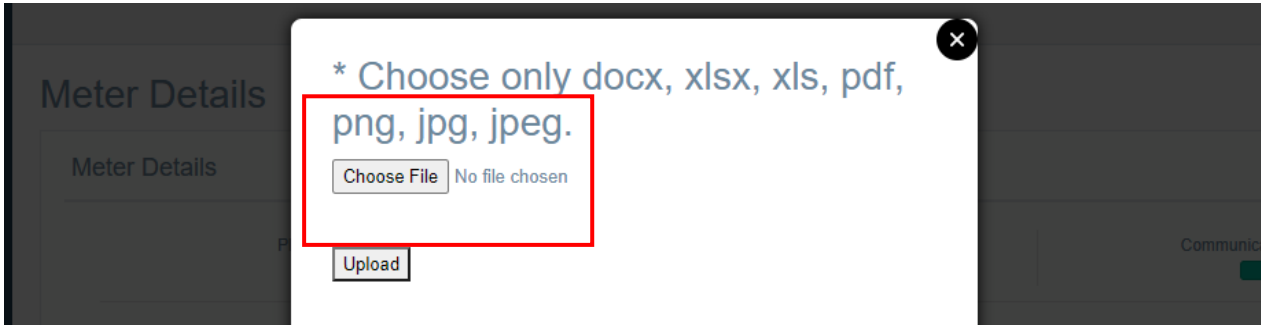


Meter information table

Add file option The Installer Name and Project Administrator information can be viewed on the left side of this screen.

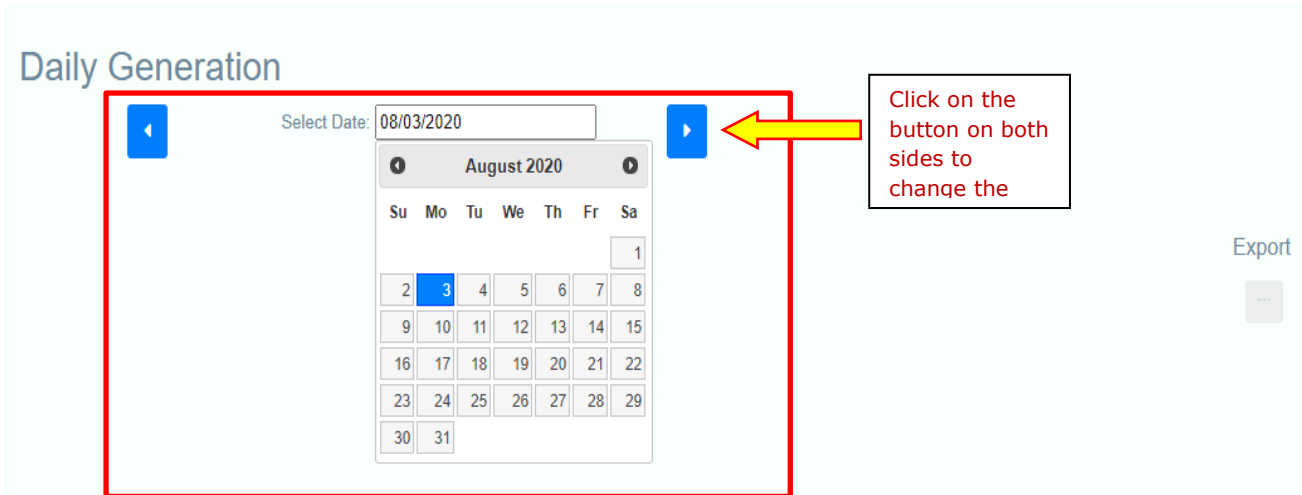
2. The **Installer Name** and **Project Administrator** information can be viewed on the left side of this screen.

This section also includes Project files where the project related files can be uploaded by clicking on the **Add files** button provided at the bottom. The following **choose file** option will pop up. Select the file you want to upload and click on **Upload**.



3. Calendar Function

Below is a screen shot of the calendar view. Click on the left and right arrows to move from one month to the next. Then click on the specific date that you want to view:

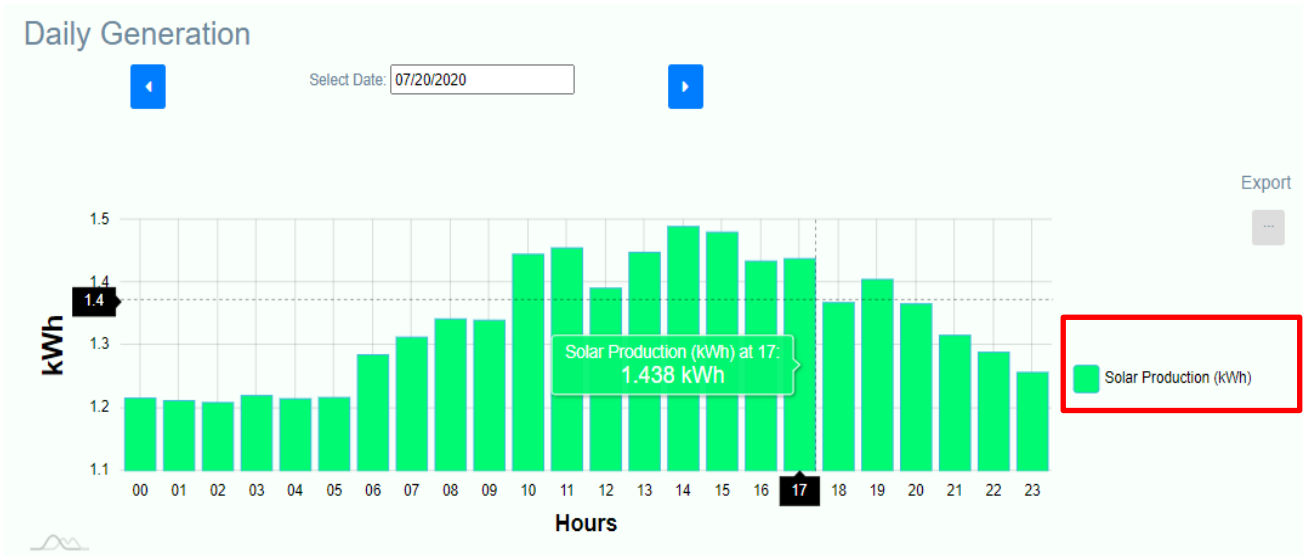


4. Daily Generation Graph

The daily generation graph is plotted between energy generated (kWh) per Hour (h). This graph shows the values for the entire day with 1-hour time intervals. Select the specific date in calendar option to view the respective day production.

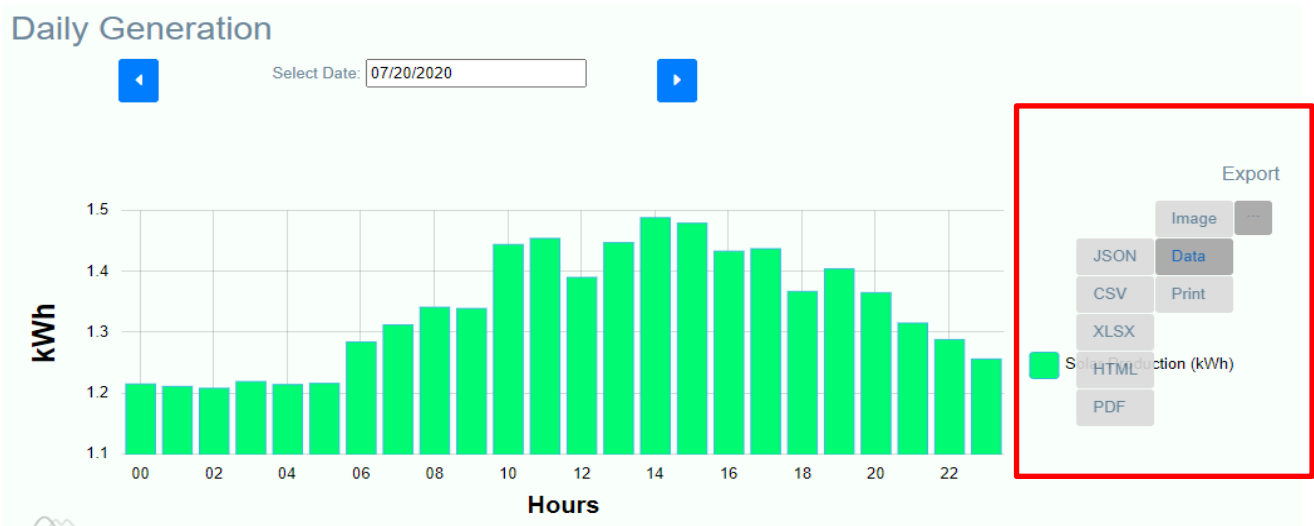
The legend (Highlighted box) on the right side of the graph is the solar production in kWh.

Cursor with **tooltip feature** is also provided; just hover over the data to see the numerical data:



5. Data Export Option

Click on the export button provided on right corner of each graph. Different formats are available like **Image** in PNG, JPG, SVG, PDF & **Data** in JSON, CSV, XLSX, HTML, and PDF. There is also a print option to print the graph.

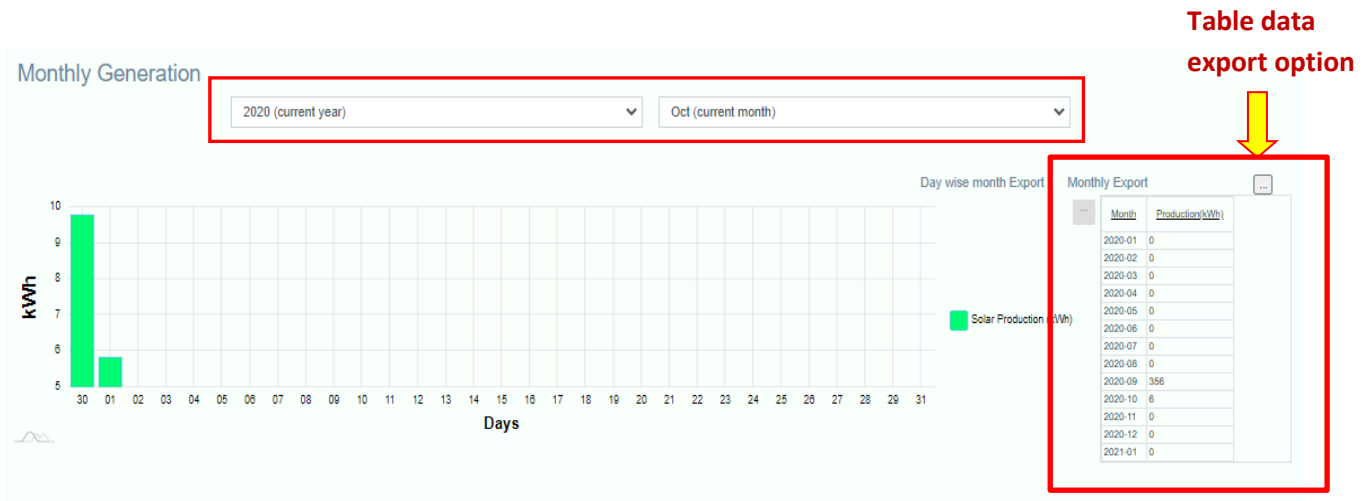


6. Monthly Generation Graph

Monthly generation graph has the daily data by month for the entire year. By default, it will be on the current month. To change the month, use the **calendar option** provided on the top.

A table view of each month for the selected calendar year is also provided on the right side of the graph. These values can be **exported** in excel format by clicking on the export option provided in

the top right corner of table.



7. Yearly Generation Graph

Yearly generation graph will show the data for the current year by month. The User can also see the previous year by selecting any date in the previous year in calendar menu.

The year table provided on the right side of graph has the yearly data and this data can be exported in excel format.

